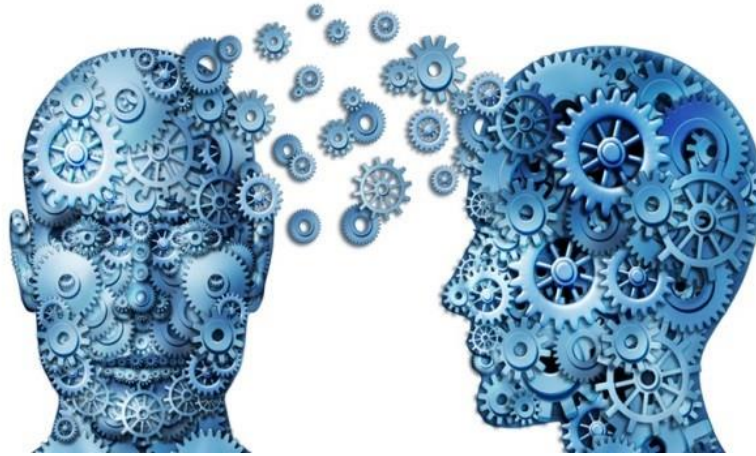


# Psychology

Examination board: AQA

---



Psychology is the study of human mind and behaviour. At A Level, we study all aspects of this fascinating subject: mental illness, attachment behaviour, and the impact of social situations on our ability to make informed decisions are just three areas that are examined over the course of the two years. We engage with the research base, examining several foundational psychological experiments to help us understand others and ourselves in more detail.

The psychology course will suit anyone who enjoys learning about what motivates and affects human behaviour.

## Content

There are three psychology examination papers, each of which lasts two hours. They are taken at the end of the second year of the course.

In the first year of the course, we study the following modules:

- Research Methods
- Social Influence
- Attachment
- Psychopathology
- Biopsychology
- Approaches in Psychology.

In the second year of the course, we go into more depth, attempting to understand specialist areas of knowledge within the field; we study the following modules:

- Research Methods
- Biopsychology
- Issues & Debates
- Schizophrenia
- Relationships
- Aggression.

## Extra-curricular opportunities

These include trips, lectures and extension sessions.